

Powerdot

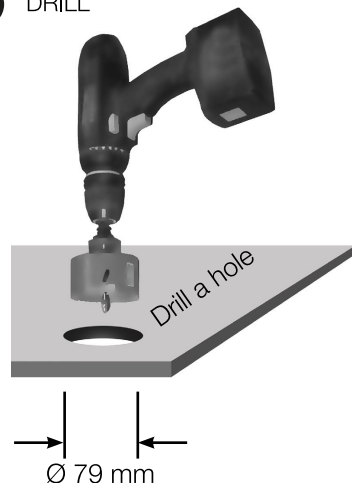
□ 935-PD10W
■ 935-PD10



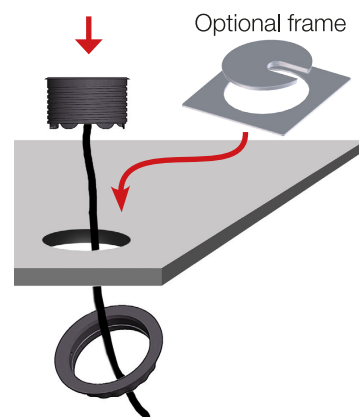
CONTENT:



A DRILL

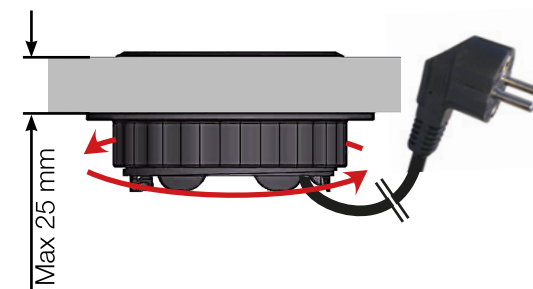


B INSERT



C

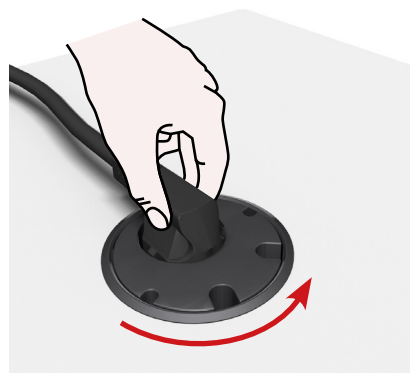
TURN CLOCKWISE & PLUG IN
Turn the plastic fastening nut as far up the thread as possible. Make sure that it has been thoroughly tightened. Lastly, plug the Schuko plug into the wall socket.



- 4 Cable-throughs
- 1 Schuko socket
- 1.5 meter cable

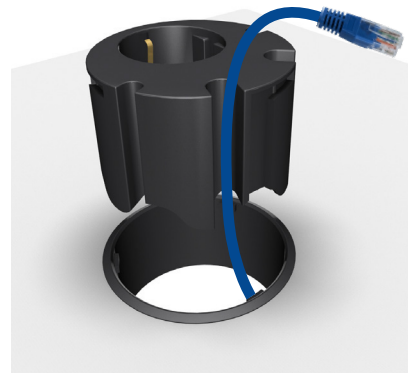
1

CONNECT & RELEASE
Rotate plug counter-clockwise until loose.



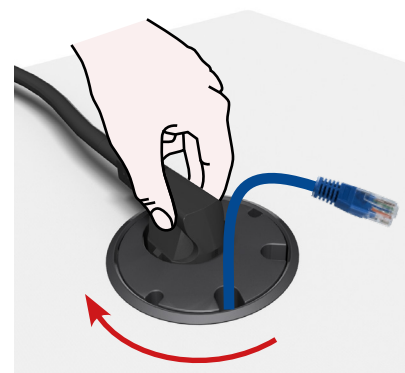
2

ORGANIZE
Cables according to size.



3

LOCK
Rotate plug clockwise to reattach.



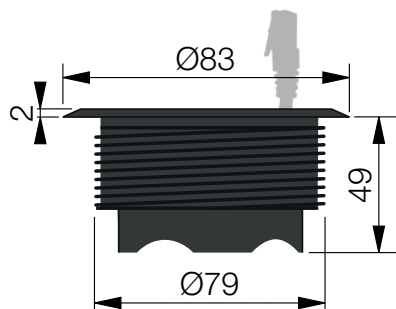
□ 935-PD10W

■ 935-PD10

Powerdot Power 4 Magic Holes



Front View



Side View - With cable and fastening nut

